

Cut out shapes. Have your child put the different cards in the correct categories.

Cetaceans

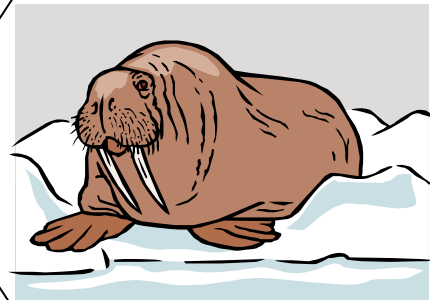
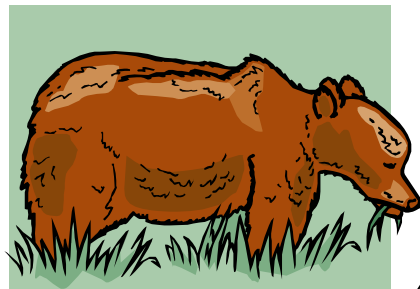
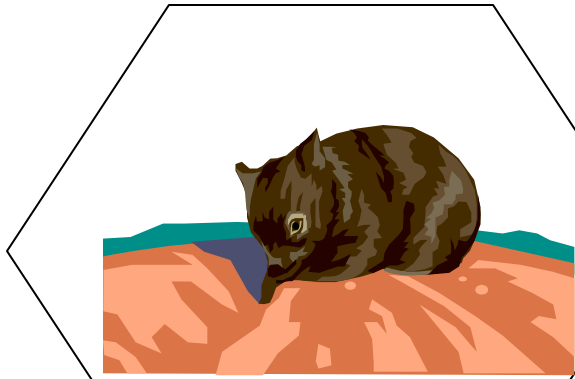
Sirenians

Rodents

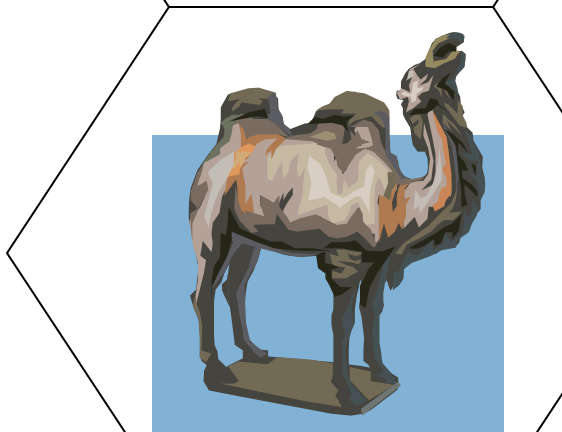
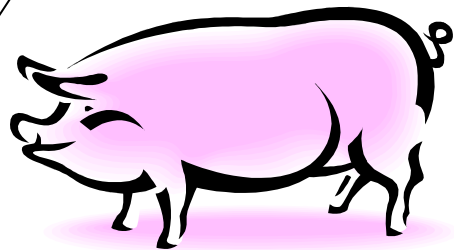
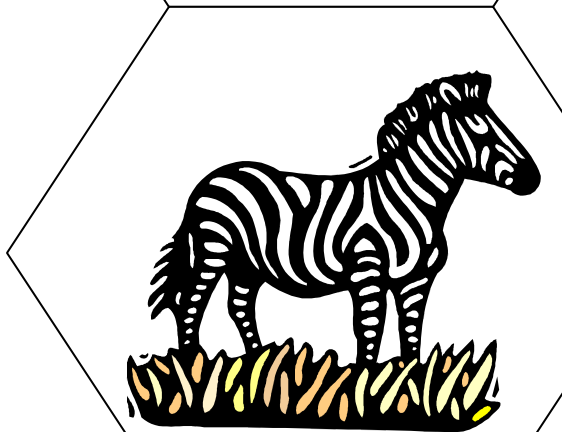
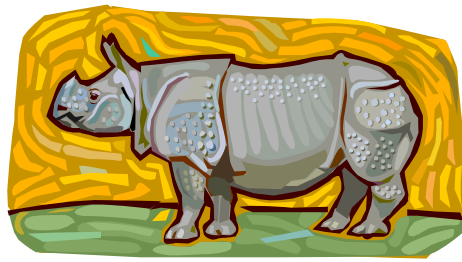
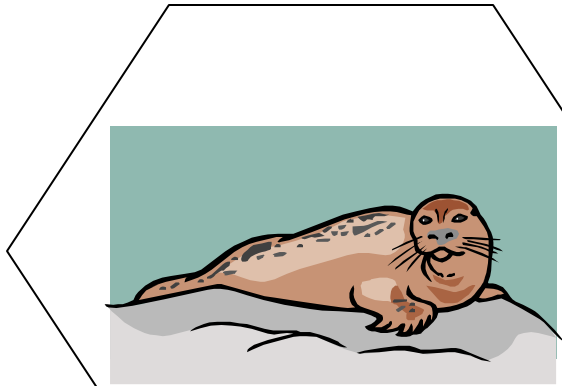
Insectivores



Cut out shapes. Have your child put the different cards in the correct categories.



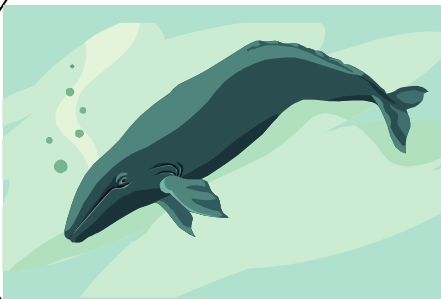
Cut out shapes. Have your child put the different cards in the correct categories.



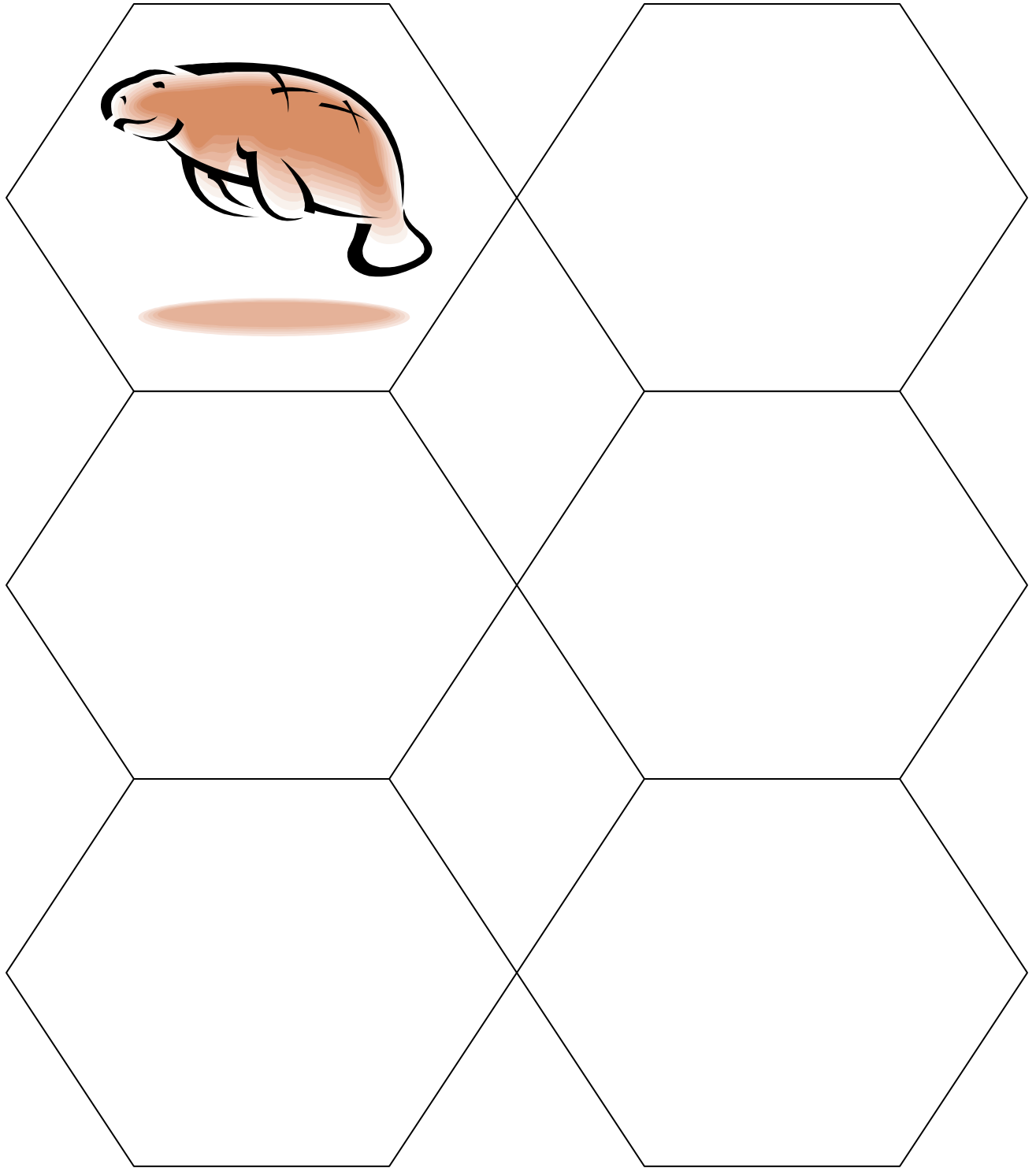
Cut out shapes. Have your child put the different cards in the correct categories.



Cut out shapes. Have your child put the different cards in the correct categories.



Cut out shapes. Have your child put the different cards in the correct categories.



Cut out shapes. Have your child put the different cards in the correct categories.

Workbox Mammal Order Classification Cards

Ideas

Cut out the cards and do one of the following options.

*Lay the mammal categories out on the floor. Have your child place the correct pictures under each category (see answers below).

*Place library pockets in a file folder. Label each pocket with one of the categories. Have your child place the correct animal in each pocket.

Answer Key

Monotremes-**Mammals that lay eggs.** Example: platypus

Marsupials-**Mammals with pouches.** Examples: kangaroo, wombat, koala

Carnivores-**Mammals that eat meat.** Examples: lion, bear, badger

Pinnipeds- **Mammals with flippers.** Examples: walrus, seal

Ungulates-**Mammals with hooves.** Examples: rhino, zebra, pig, camel, cow

Primates-**Mammals with forward-facing eyes, opposable thumbs, and big brains.** Examples: monkeys, apes, lemurs

Cetaceans-**Aquatic mammals with blowholes.** Examples: whales (baleen and toothed, dolphins)

Sirenians-**Large, herbivorous water-dwelling mammals.** Examples: manatees

Rodents-**Mammals with large incisors for gnawing.** Examples: prairie dogs, squirrels, beavers, capybaras

Insectivores-**Small mammals that eat insects and other small animals.** Examples: hedgehogs, moles