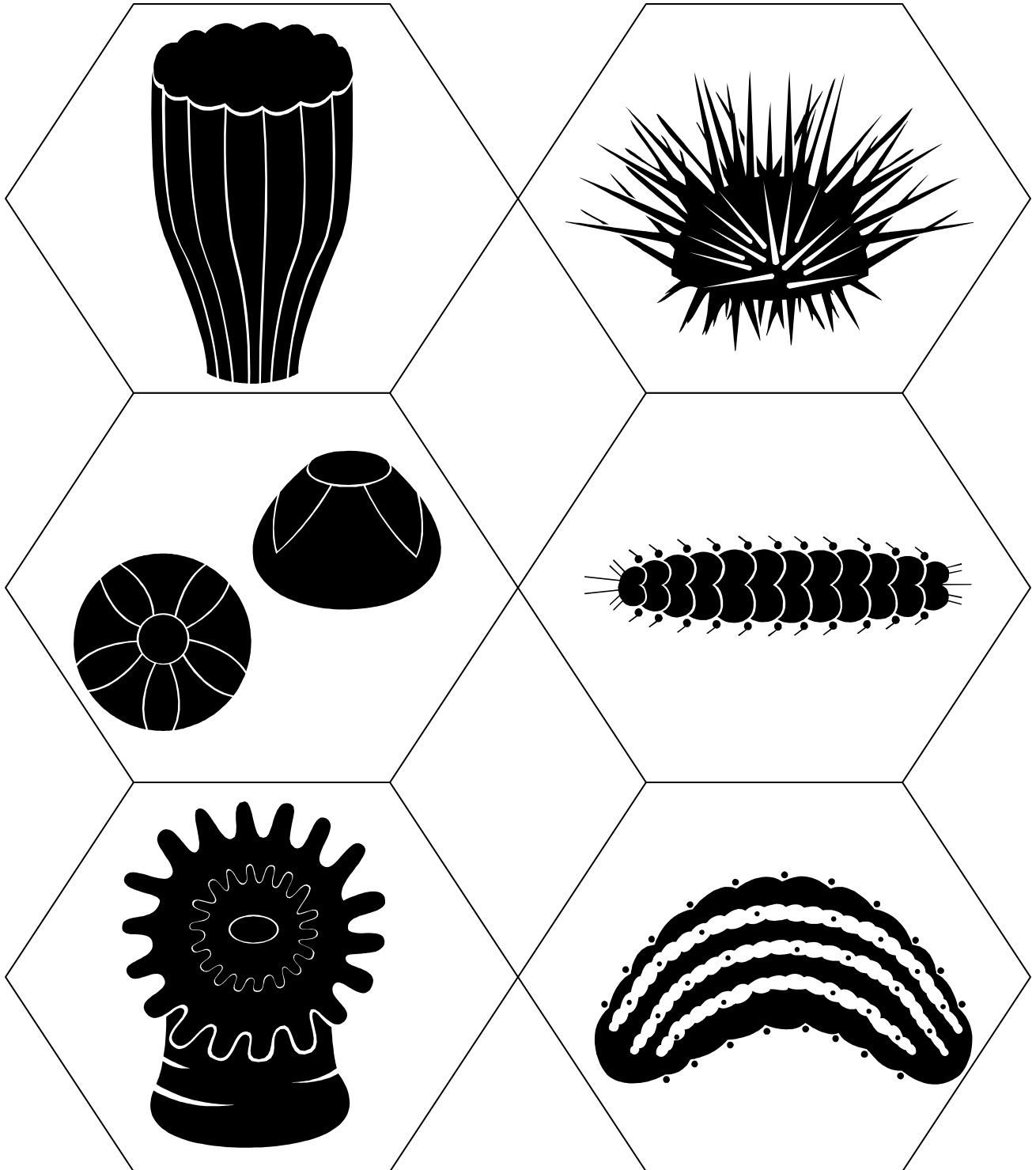
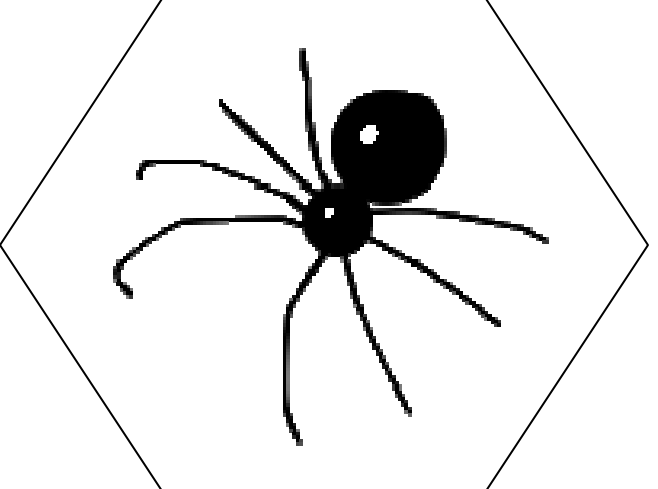
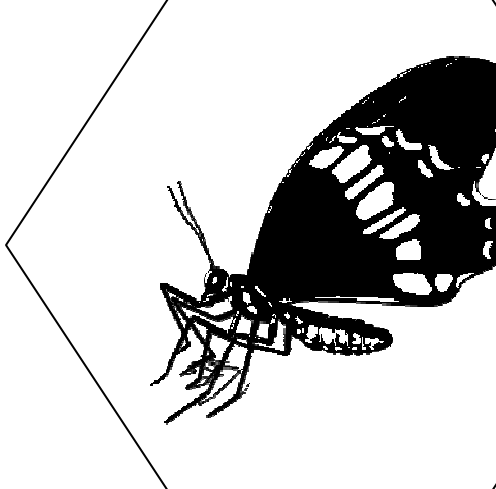
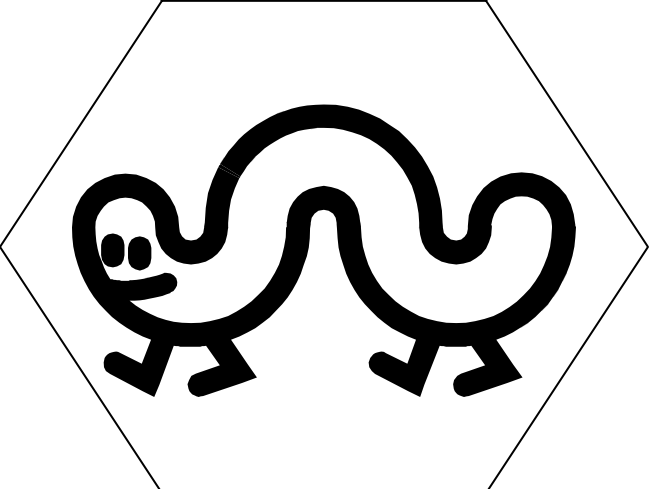
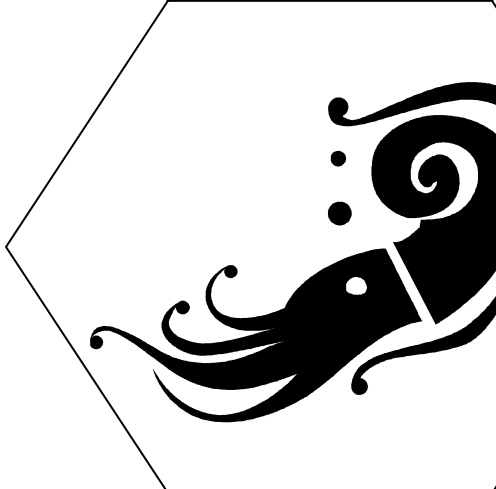
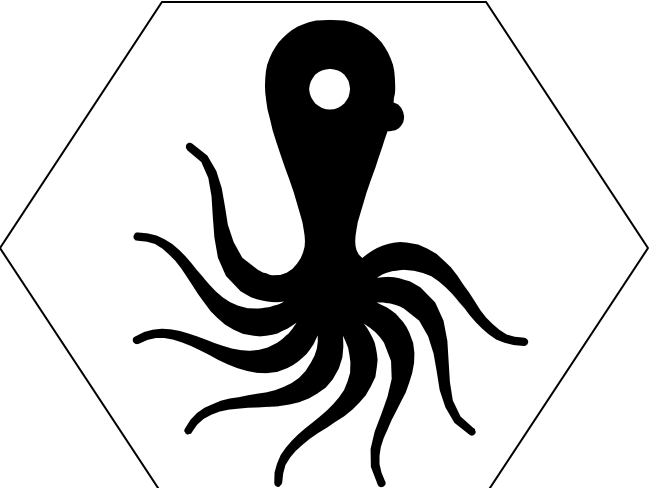
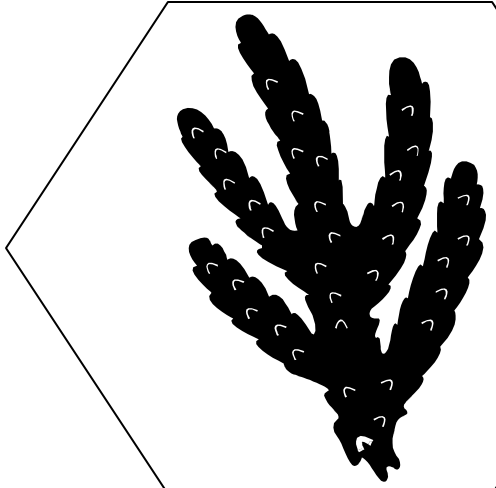


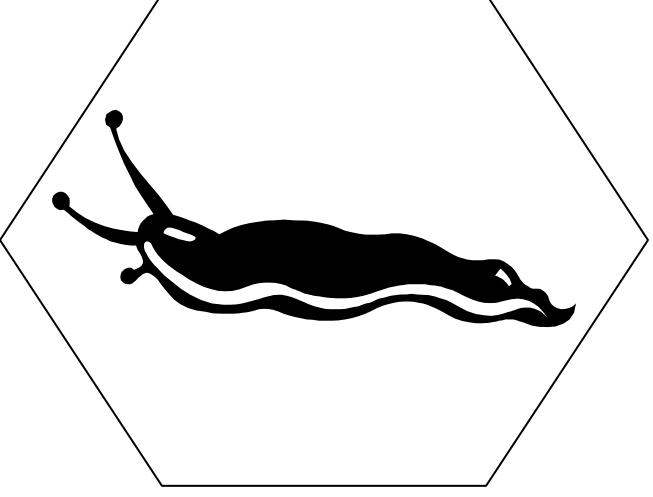
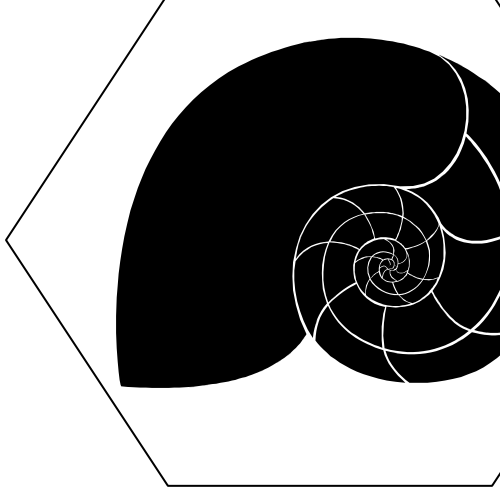
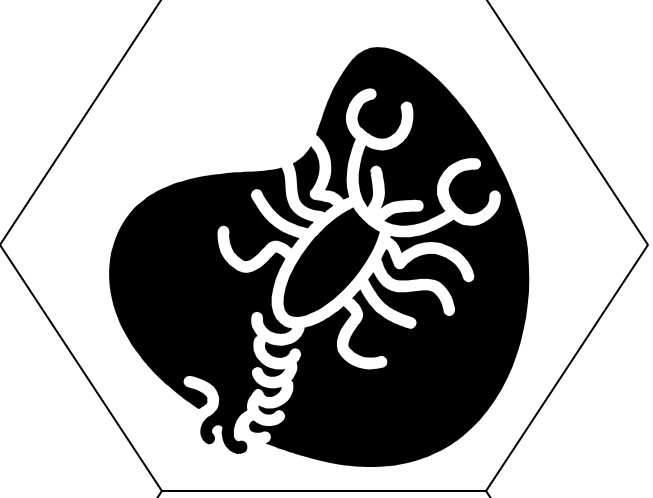
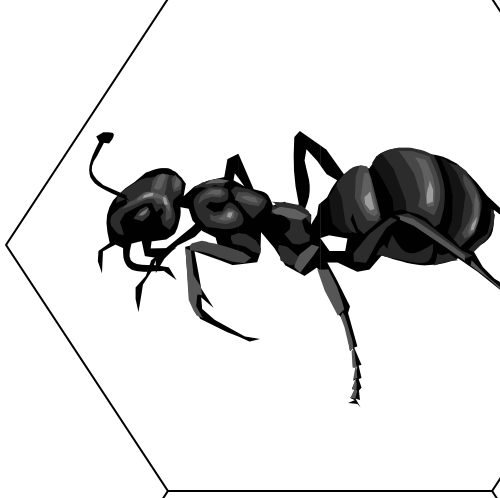
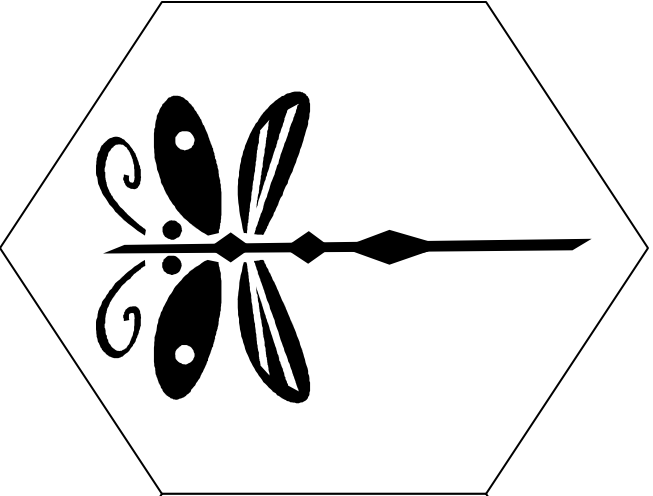
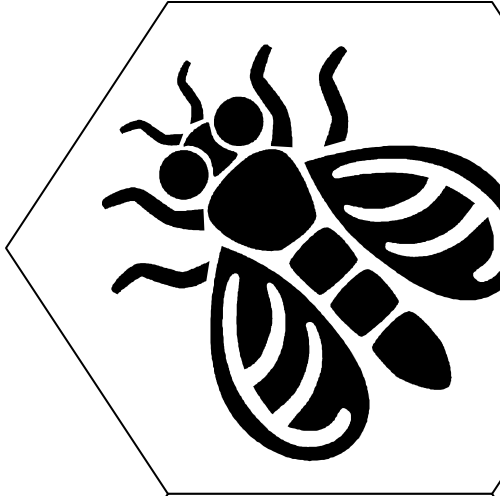
Cut out shapes. Have your child put the different cards in the correct categories.



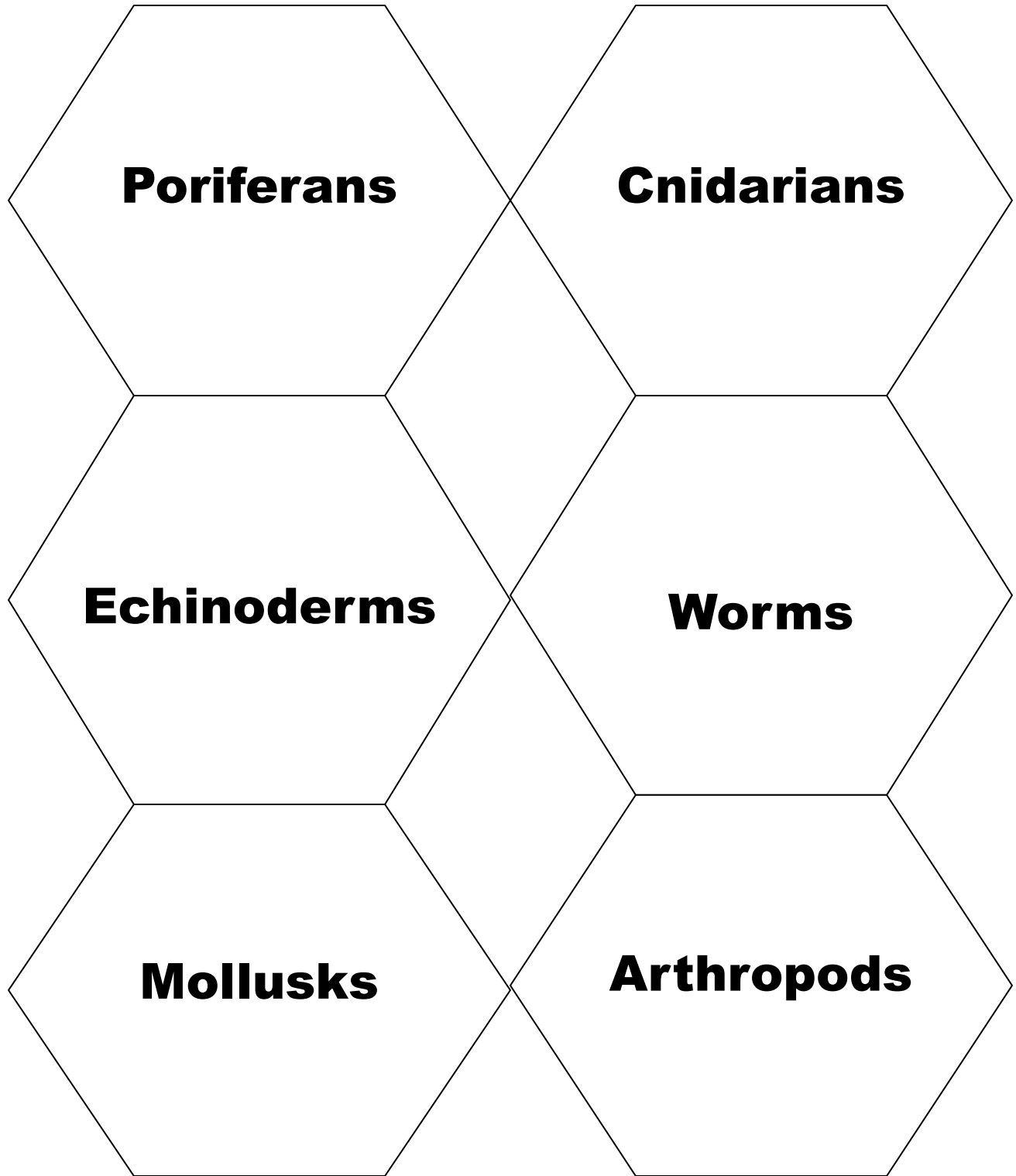
Cut out shapes. Have your child put the different cards in the correct categories.



Cut out shapes. Have your child put the different cards in the correct categories.



Cut out shapes. Have your child put the different cards in the correct categories.



Cut out shapes. Have your child put the different cards in the correct categories.

## Workbox Invertebrate Classification Cards

### Ideas

1. Cut out the cards and do one of the following options.

\*Lay the invertebrate categories out on the floor. Have your child place the correct pictures under each category (see answers below).

\*Place 6 library pockets in a file folder. Label each pocket with one of the categories. Have your child place the correct animal in each pocket.

### Answer Key

Arthropods- **animals with jointed legs and an exoskeleton.** Examples: insects, arachnids (spiders, scorpions), millipedes and centipedes, crustaceans (crabs, lobsters).

Mollusks-**soft-bodied animals that sometimes have shells.** Examples-squid, octopus, “shelled” animals, slugs

Worms- self explanatory!

Enchinoderms-**spiny-skinned animals with suction-tubed “feet”.** Examples- starfish, sea urchins, sea cucumbers, sand dollars

Poriferans-sponges

Cnidarians-**hollow-bodied animals with tentacles and stinging cells.** Examples: sea anemones, coral, jellyfish